

# **Zoom Boom** *by* **CareLift**<sup>®</sup>



**ZB32032** • 32,000 lb. capacity  
• 32 ft. lifting height

**SUPERIOR TOOL CARRIER**

# ZOOM BOOM Model ZB32032

## DIMENSIONS

Wheelbase .....	144"	366 cm
Overall width .....	118"	300 cm
Overall height .....	120"	305 cm
Length less forks .....	243"	617 cm
Ground clearance .....	18"	46 cm
Total weight (approx.) .....	68,000 lb	30,900 kg
Turn radius (inside).....	280"	711 cm
Frame level .....	+/-5 Degrees	

## SPECIFICATIONS

Engine .....	Cummins, QSB 5.9 turbocharged and intercooled electronic diesel, 173 horsepower @ 2500 rpm
Transmission .....	Electric powershift, 3 speed forward and 3 speed reverse Top speed - 20.5 mph 33 km/hr
Axles .....	AxleTech steerable outboard planetary
Brakes .....	Dry disc brakes on all four wheels (split dual system) Parking - pinion mounted dry disc on both axles
Tire .....	16.00 x 25-28 PR tubeless Industrial Service
Steering .....	2 wheel, 4 wheel round, 4 wheel crab
Boom.....	2 section, welded construction Maximum lift height - 32' - 975 cm Maximum forward reach - 16' 3" - 495 cm Dual shaft type carriage Carriage rollback - 5 degrees (boom lowered) Carriage forward tilt - 6 degrees (boom elevated)
Forks .....	3" x 8" x 60" 8 cm x 20 cm x 152 cm
General .....	Fuel/hydraulic oil tank - 60 US gal - 227L Dual load sensing piston type Hydraulic pump - 60 gpm @ governed rpm 12 volt - 130 amp. alternator

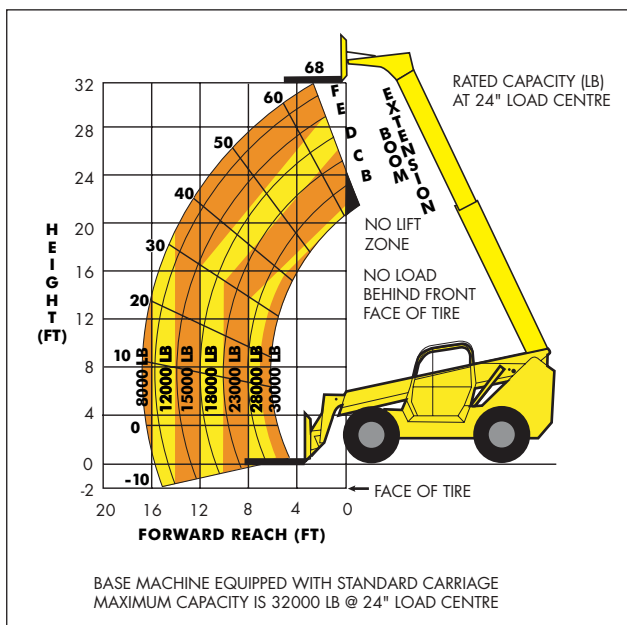
## STANDARD EQUIPMENT

- Pilot-operated joystick boom & frame level controls
- Gauge instrumentation
- Hydraulic frame leveling
- Load capacity chart
- Automatic self-leveling forks
- 4 wheel drive
- Quick disconnect carriage
- ROPS/FOPS operator compartment
- Lockable fuel cap and engine compartment
- Service and park brake activated transmission disconnect
- Anti restart keyed ignition switch with neutral start
- Dual rear axle "stable lock" cylinders
- Adjustable seat
- Right-hand arm rest
- Dual batteries
- Murphy PV-100 Powerview
- Anti freeze
- Retractable seat belt
- Load backrest
- Central frame tilt lubrication
- Electric horn
- Plate deck covers
- Anti-skid floor and steps
- Yellow paint with black trim
- Overcentre lock valves on all hydraulic functions
- Electronic foot throttle
- External rear view mirrors
- Two stage air cleaner c/w safety element and restriction indicator
- 4 wheel power steering
- Automatically activated S.A.H.R. parking brake on axle pinion
- Return line hydraulic oil filter (10 micron)
- Hydraulic tank pickup sump strainers
- Muffler guard
- Air intake grid heater
- Low coolant level warning
- Water in fuel warning

## OPTIONAL EQUIPMENT

- Various carriages/fork sizes
- Turn signals/lights
- Working lights
- Flashing beacon
- Auxiliary hydraulics
- Enclosed operator cab
- Air conditioning
- Fork positioner
- Sideshift carriage
- Material bucket
- Hydraulic winch
- Foam filled tires
- Fenders
- Coil ram
- Other specialized attachments
- Mine code specification

## CAPACITY CHART



- Machine design complies with ASME/ANSI B56.6-2002 stability requirements for rough terrain forklifts.
- For other specialized attachments consult factory for load rating.
- Read boom angle and boom extension, then determine allowable load from chart.
- Figures shown are stacking capacity with truck level on a firm surface and with properly inflated tires.
- Do not exceed rated loads as dangerous and unstable machine conditions will result.

## IMPORTANT

- All capacities rated on firm ground, with the machine steered straight and frame level.
- Always travel with boom retracted in the lowest possible position.
- Never position fork carriage behind front face of tire.

**Note:** Materials and specifications are subject to change without notice.



*Extending ourselves for you.*

CareLift Equipment Limited  
 5111 Fountain St. N., P.O. Box 250 Breslau, Ontario N0B 1M0  
 Tel: (519) 648-2282 • Toll Free: 1-800-870-0441  
 Fax: (519) 648-3434 • Website: [www.carelift.com](http://www.carelift.com)  
 email: [info@carelift.com](mailto:info@carelift.com)